

ADDENDUM

Addendum No. 1

Owner: City of Owosso
Project: 2018 Street Project – Contract 1
Engineer: City of Owosso / Fleis & Vandenbrink

NOTICE TO ALL PROSPECTIVE BIDDERS

BIDS DUE: April 3, 2018

=====

This Addendum is a part of the Contract Documents and modifies the previously issued Bidding Documents. Acknowledge receipt of this Addendum in the space provided on the “*Signature Page and Legal Status*” section of the Bid Proposal. Failure to do so may result in rejection of the Bid.

ITEM NO. 1:

Section: **Construction Plans** [Title] **Sheet HR4 and HR6 Revisions**

Remove Sheets HR4 and HR6 of the Construction Plans and replaced with the attached Sheets HR4 and HR6, revised dated March 20, 2018.

Changes have been made to the proposed storm sewer and water main near the Harding Street and Willow Springs Drive intersection between Sta. 4+00 and Sta. 5+00. The 75 feet of proposed storm sewer from Sta. 4+29 to Sta. 4+96 has been raised to allow the proposed water main replacement servicing Willow Springs Drive to cross above the existing sanitary sewer and below the proposed storm sewer as shown on the “Crossing at Willow Springs Drive” detail on revised Sheet HR6. The proposed water main along Harding Drive will have an approximately 6-foot of cover at the proposed tee and valve location at Sta. 4+52.

As a result of the storm sewer and water main adjustment, a temporary conflict is anticipated between the proposed water main and the existing storm sewer. A temporary storm sewer pipe shall be provided over the proposed water main and affixed on both ends to the existing storm sewer pipe to provide positive drainage of the Willow Springs Drive intersection until the new storm sewer is constructed, as shown on the “Crossing at Willow Springs Drive” detail on Sheet HR6.

Proposed MH #5095 (Sta. 4+23) has been increased from a 48-inch diameter structure to a 60-inch diameter structure.

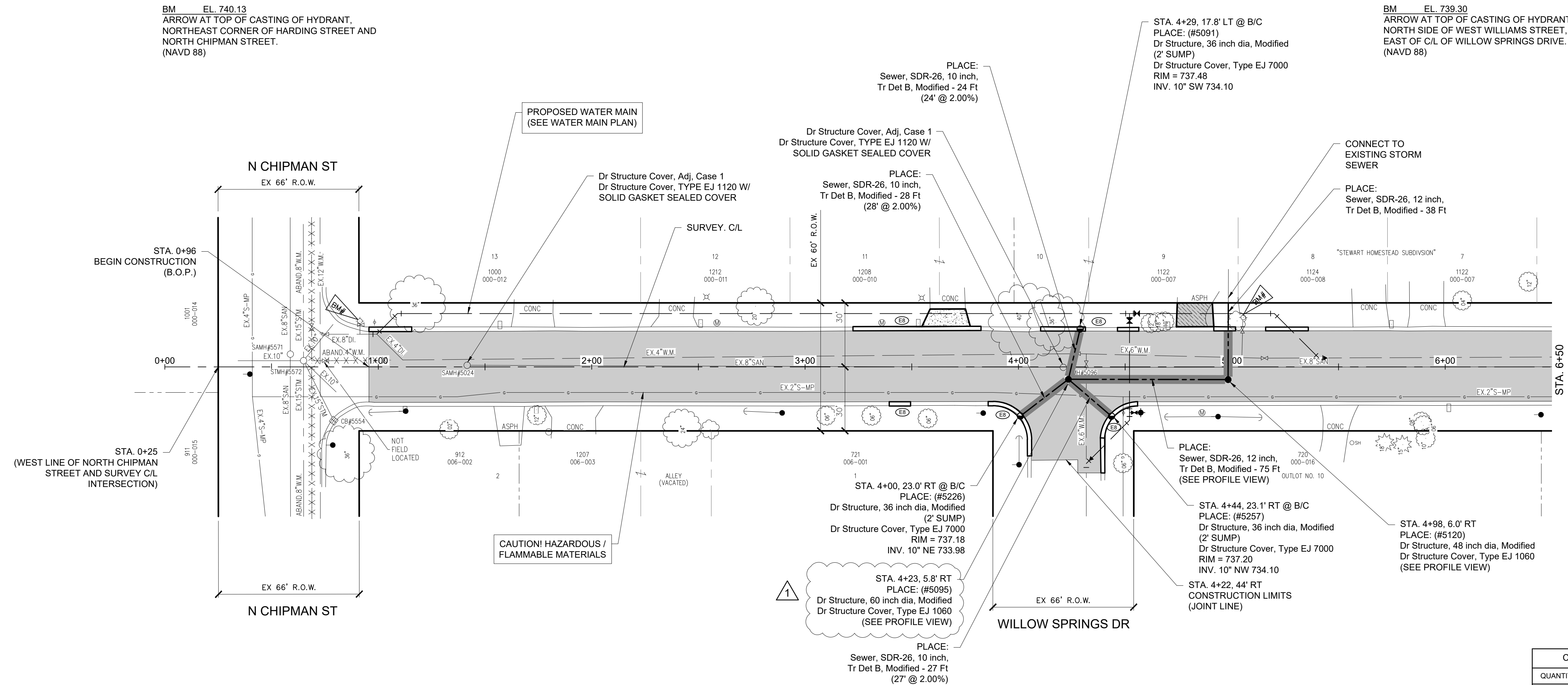
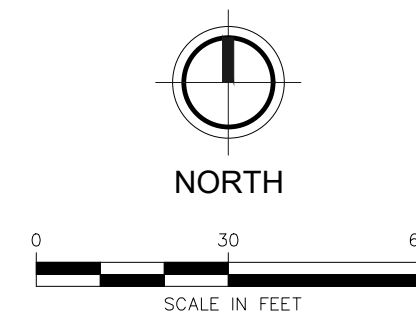
Approximate Quantities shown in the Bid Proposal will remain unchanged for this revision.

END OF ITEM NO. 1

END OF ADDENDUM NO. 1

BM EL. 740.13
ARROW AT TOP OF CASTING OF HYDRANT,
NORTHEAST CORNER OF HARDING STREET AND
NORTH CHIPMAN STREET.
(NAVD 88)

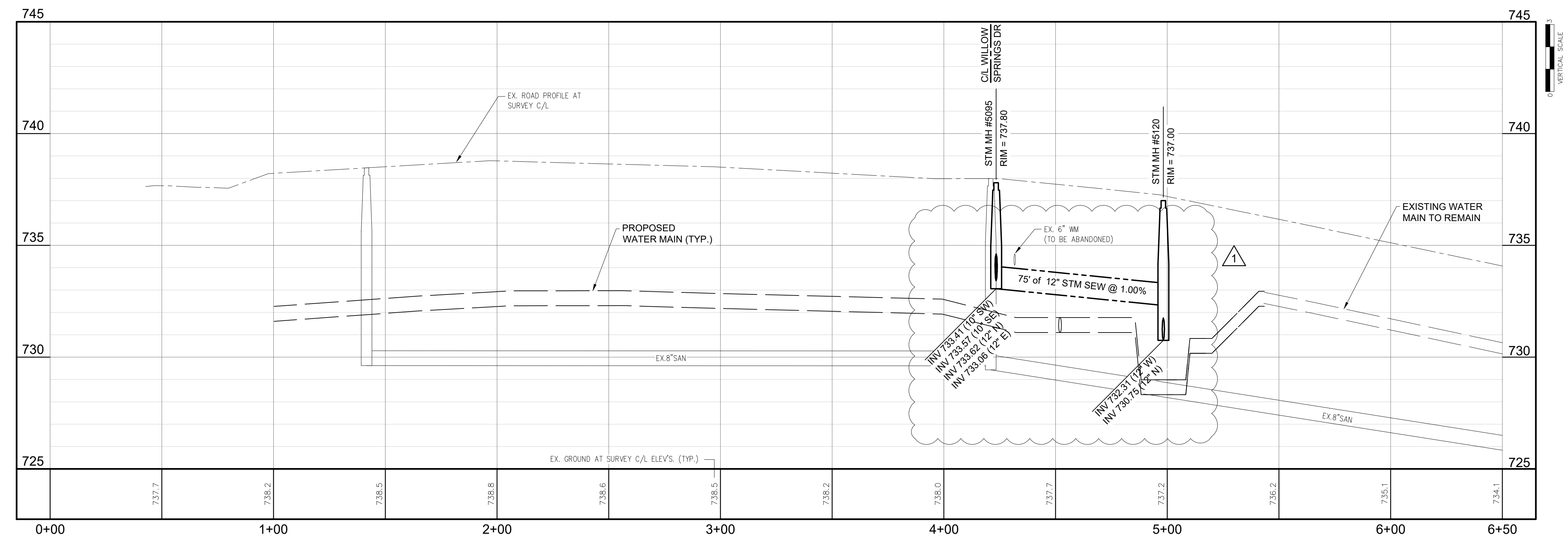
BM EL. 739.30
ARROW AT TOP OF CASTING OF HYDRANT,
NORTH SIDE OF WEST WILLIAMS STREET, ±80'
EAST OF C/L OF WILLOW SPRINGS DRIVE.
(NAVD 88)



- LEGEND**
- Curb and Gutter, Conc, Det F4, Modified
 - Sewer, SDR-26, _ inch, Tr Det B, Modified
 - Dr Structure, _ inch dia, Modified (Catch Basin, Manhole)
 - HMA / HMA Approach
 - ▨ Driveway, Nonreinf, Conc, _ inch
 - ▨ Aggregate Surface Cse, 12 inch
 - ▨ Sidewalk, Conc, _ inch
 - ▨ Sidewalk, Ramp, Conc, _ inch
 - Abn Dr Structure, Abandon
 - Adj Dr Structure Cover, Adj, Case _ / Valve Box, Adj
 - ⊙ STANDARD SOIL EROSION KEY

CONSTRUCTION QUANTITIES (THIS SHEET)

QUANTITY	UNIT	WORK ITEM
195	Ton	HMA, 5E3
390	Ton	HMA, 2C
2162	Syd	Aggregate Base, 6 inch, Modified
2162	Syd	Geotextile, Separator
18	Syd	Driveway, Nonreinf Conc, 6 inch
228	Ft	Curb and Gutter, Conc, Det F4, Modified
3	Ea	Dr Structure, 36 inch dia, Modified
1	Ea	Dr Structure, 48 inch dia, Modified
1	Ea	Dr Structure, 60 inch dia, Modified
2	Ea	Dr Structure Cover, Type EJ 1060
3	Ea	Dr Structure Cover, Type EJ 7000
2	Ea	Dr Structure Cover, Adj, Case 1
2	Ea	Dr Structure Cover, Type EJ 1120 W/ SOLID GASKET SEALED COVER
79	Ft	Sewer, SDR-26, 10 inch, Tr Det B, Modified
113	Ft	Sewer, SDR-26, 12 inch, Tr Det B, Modified



CITY OF OWOSSO, MICHIGAN
ENGINEERING DIVISION
DEPT. OF PUBLIC SERVICE

NO.	REVISIONS	DATE	BY
	3/20/18	GLR	

MODE COMMENTS: ORIGINAL PLAN

CHECKED BY: APPROVED BY:

BENCH MARK DATA	DESCRIPTION
ELEV.	

2018 STREET PROGRAM
HARDING ST
ROAD PLAN AND PROFILE

FIELD BOOK
PG.

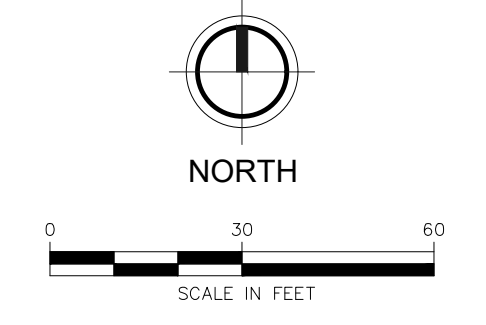
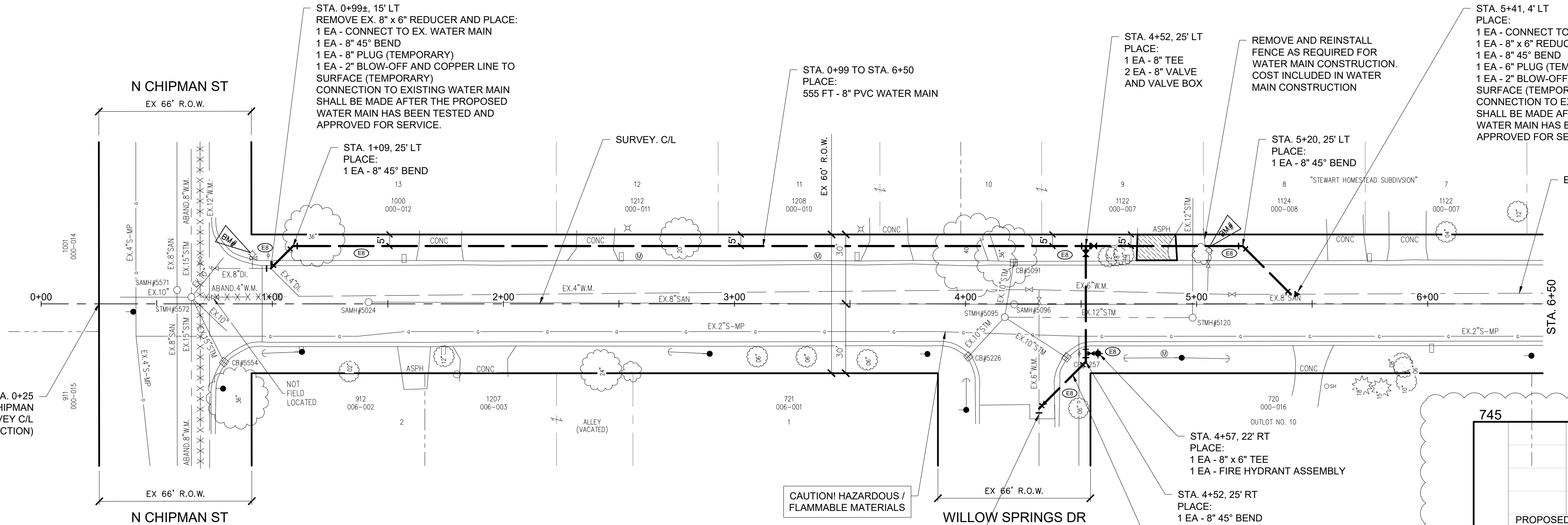
MARCH, 2018
PROJECT NO. 832190



HR4

BM EL. 740.13
 ARROW AT TOP OF CASTING OF HYDRANT,
 NORTHEAST CORNER OF HARDING STREET AND
 NORTH CHIPMAN STREET.
 (NAVD 88)

STA. 0+25
 (WEST LINE OF NORTH CHIPMAN
 STREET AND SURVEY C/L
 INTERSECTION)



BM EL. 739.30
 ARROW AT TOP OF CASTING OF HYDRANT,
 NORTH SIDE OF WEST WILLIAMS STREET, ±80'
 EAST OF C/L OF WILLOW SPRINGS DRIVE.
 (NAVD 88)

WATER MAIN QUANTITIES (THIS SHEET)		
QUANTITY	UNIT	WORK ITEM
3	EA	CONNECT TO EX. WATER MAIN
4	EA	EXISTING VALVE AND VALVE BOX ABANDONMENT
1	EA	EXISTING VALVE AND VALVE BOX REMOVAL
1	EA	EXISTING HYDRANT REMOVAL
260	LF	8" PVC WATER MAIN, TRENCH BACKFILL DETAIL 'G'
275	LF	8" PVC WATER MAIN, DIRECTIONAL DRILL
1	EA	4" PLUG
4	EA	6" PLUG
1	EA	8" PLUG
2	EA	8" x 6" REDUCER
1	EA	8" x 6" TEE
1	EA	8" TEE
1	EA	8" 45° BEND
10	EA	8" 45° BEND
2	EA	8" VALVE AND VALVE BOX
1	EA	90° FIRE HYDRANT ASSEMBLY
5	EA	NEW WATER SERVICE, OPEN CUT
4	EA	NEW WATER SERVICE, FREEBORE
3	EA	2" BLOW-OFF AND COPPER LINE TO SURFACE
3	EA	SUPPLY & INSTALL METER PIT, COMPLETE
3	EA	WATER METER PIT, REM

LEGEND

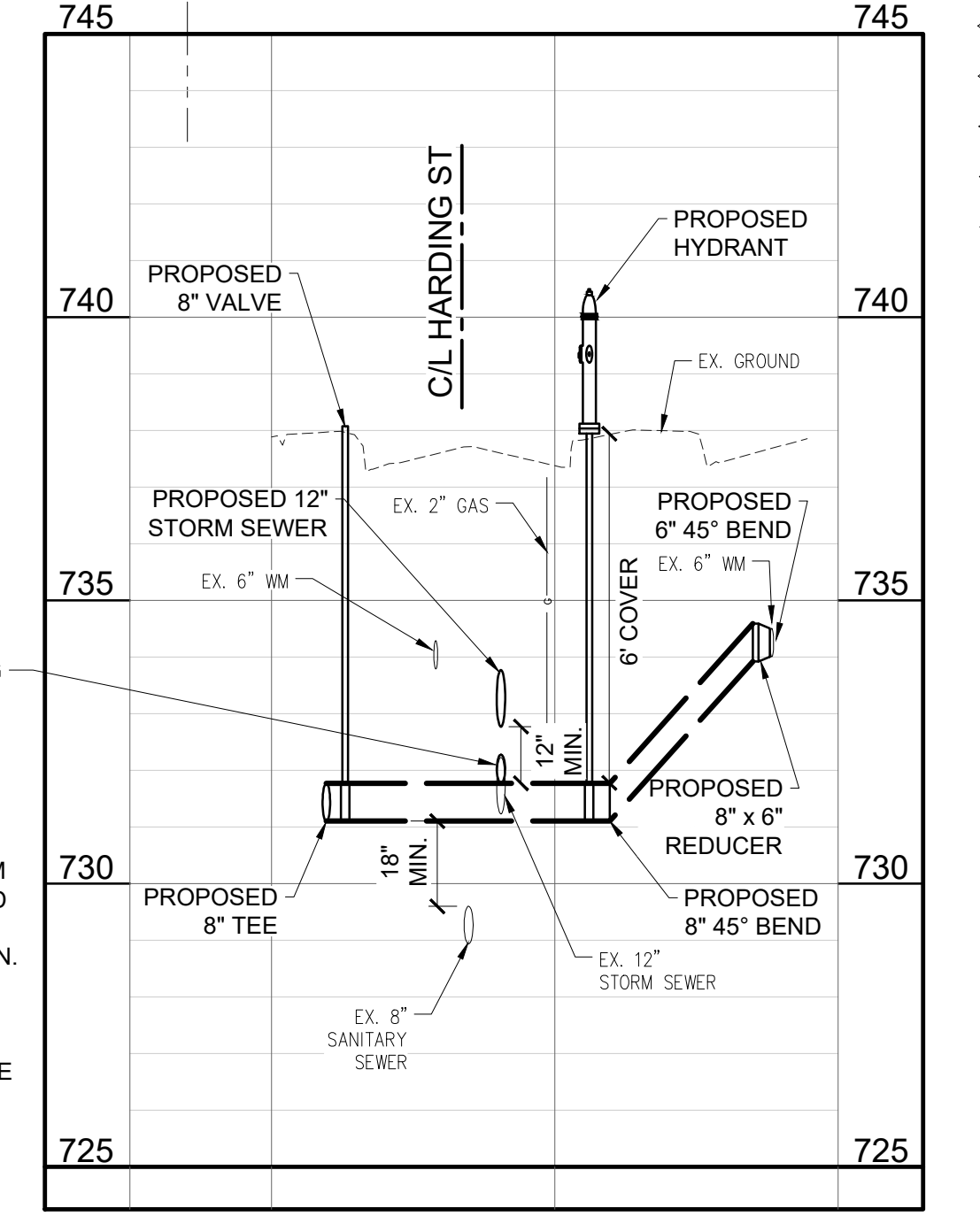
- WATER MAIN
- ✕ GATE VALVE AND BOX, _INCH
- REDUCER
- ⊕ HYDRANT / VALVE
- ⊙ STANDARD SOIL EROSION KEY

EXISTING WATER MAIN ABANDONMENT
 ONCE THE PROPOSED WATER MAIN HAS BEEN TESTED AND ACCEPTED AND ALL SERVICES HAVE BEEN TRANSFERRED, THE EXISTING WATER MAIN AND APPURTENANCES SHALL BE ABANDONED AND/OR REMOVED AS DIRECTED WITH THE FOLLOWING PAY ITEMS:

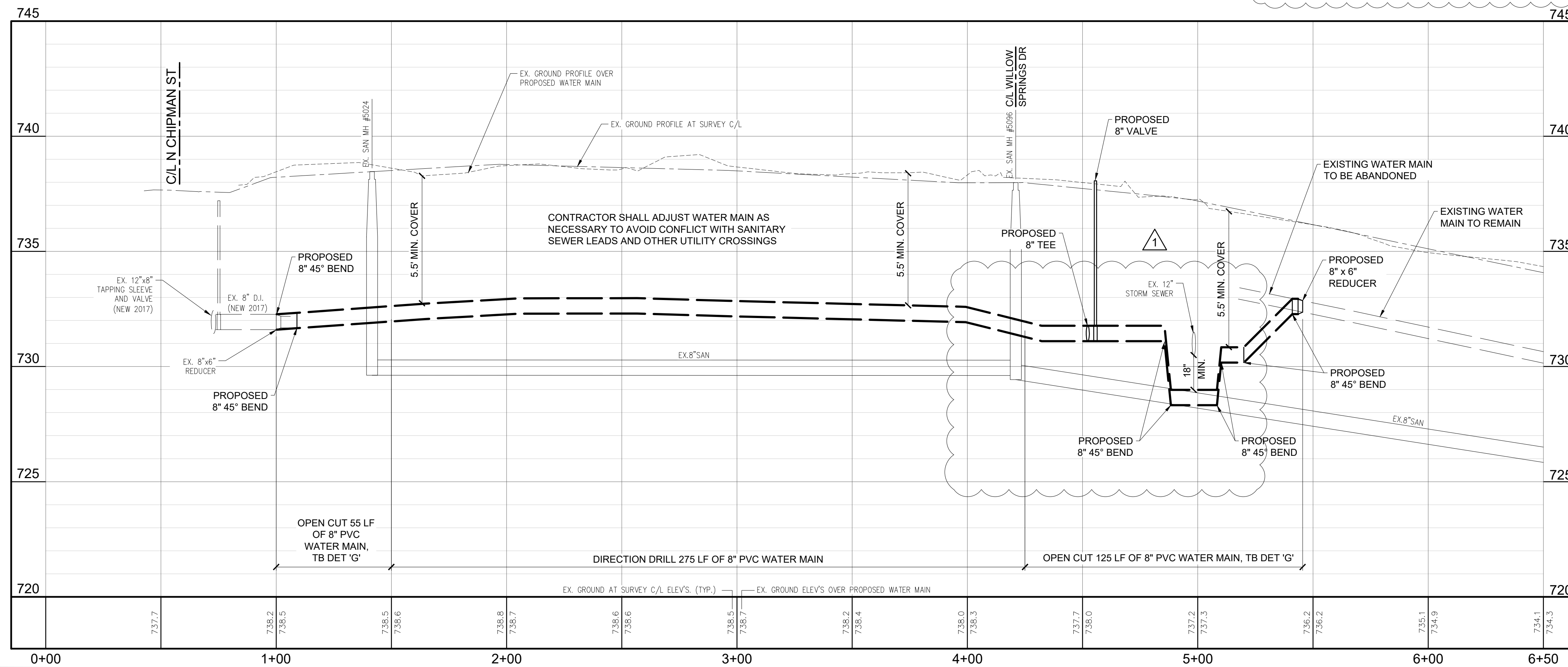
- EXISTING VALVE WITH VALVE BOX ABANDONMENT - EA
- EXISTING VALVE WITH MANHOLE ABANDONMENT - EA
- EXISTING HYDRANT REMOVAL - EA

STA. 4+32, 45° RT
 PLACE:
 1 EA - CONNECT TO EX. WATER MAIN
 1 EA - 8" x 6" REDUCER
 1 EA - 6" 45° BEND
 1 EA - 6" PLUG (TEMPORARY)
 1 EA - 2" BLOW-OFF AND COPPER LINE TO SURFACE (TEMPORARY)
 CONNECTION TO EXISTING WATER MAIN SHALL BE MADE AFTER THE PROPOSED WATER MAIN HAS BEEN TESTED AND APPROVED FOR SERVICE

PROPOSED WATER MAIN AND EXISTING STORM SEWER CROSSING CONFLICT
 CONTRACTOR SHALL PLACE TEMPORARY 6" STORM SEWER OVER PROPOSED WATER MAIN TO PROVIDE POSITIVE DRAINAGE OF INTERSECTION PRIOR TO CONSTRUCTION OF NEW STORM SEWER. TEMPORARY 6" STORM SEWER SHALL BE AFFIXED AND SEALED TO EXISTING 12" STORM SEWER ON BOTH SIDES OF PROPOSED WATERMAIN. ALTERNATE METHODS TO MAINTAIN SUFFICIENT DRAINAGE MAY BE CONSIDERED AND APPROVED BY ENGINEER. COSTS SHALL BE INCLUSIVE TO WATER MAIN CONSTRUCTION.



CROSSING AT WILLOW SPRINGS DRIVE



FLEISCHMANN & VANDENBRINK
 DESIGN, BUILD, OPERATE.
 9475 Holly Rd, Suite 201
 Grand Blanc, MI 48439
 P: 810.743.9120
 F: 810.743.1797

REVISION:
 3/2018 G.L.R. Δ

CITY OF OWOSSO
 SHIAWASSEE COUNTY, MICHIGAN
 2018 STREET PROGRAM

DESIGN TEAM:
 G.L.R., D.P.H.
 CHECK BY:
 S.M.B. MAR 2018
 DRAWING INFORMATION:
 832190_16_HR6_HR7_WMPP
 052018 gqr/cr

MARCH, 2018
 P&V PROJECT NO.
 832190



Know what's below.
 Call before you dig.

HR6