

OSBURN LAKES SUBDIVISION

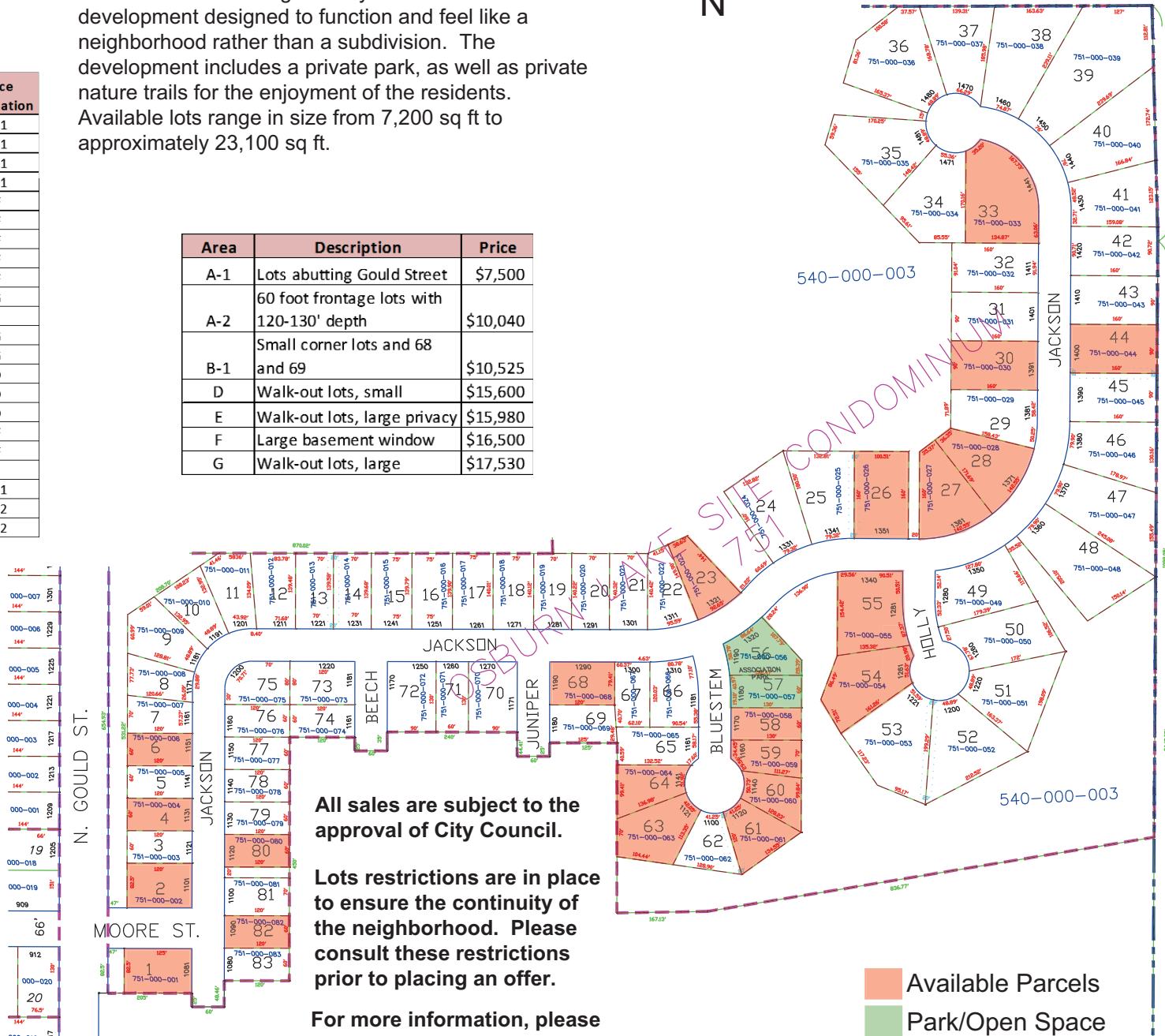


Osburn Lakes is a single family condominium development designed to function and feel like a neighborhood rather than a subdivision. The development includes a private park, as well as private nature trails for the enjoyment of the residents. Available lots range in size from 7,200 sq ft to approximately 23,100 sq ft.

Available Lots	Price Designation
1	A-1
2	A-1
4	A-1
6	A-1
23	F
26	F
27	F
28	F
30	F
33	G
44	E
54	G
55	G
58	D
59	D
60	D
61	F
63	F
64	E
68	B-1
80	A-2
82	A-2

Area	Description	Price
A-1	Lots abutting Gould Street	\$7,500
A-2	60 foot frontage lots with 120-130' depth	\$10,040
B-1	Small corner lots and 68 and 69	\$10,525
D	Walk-out lots, small	\$15,600
E	Walk-out lots, large privacy	\$15,980
F	Large basement window	\$16,500
G	Walk-out lots, large	\$17,530

OSBURN LAKE SITE CONDOMINIUM



All sales are subject to the approval of City Council.

Lots restrictions are in place to ensure the continuity of the neighborhood. Please consult these restrictions prior to placing an offer.

For more information, please contact Shannon Howansky at Century 21 Looking Glass at 517-715-3667.

- Available Parcels
- Park/Open Space