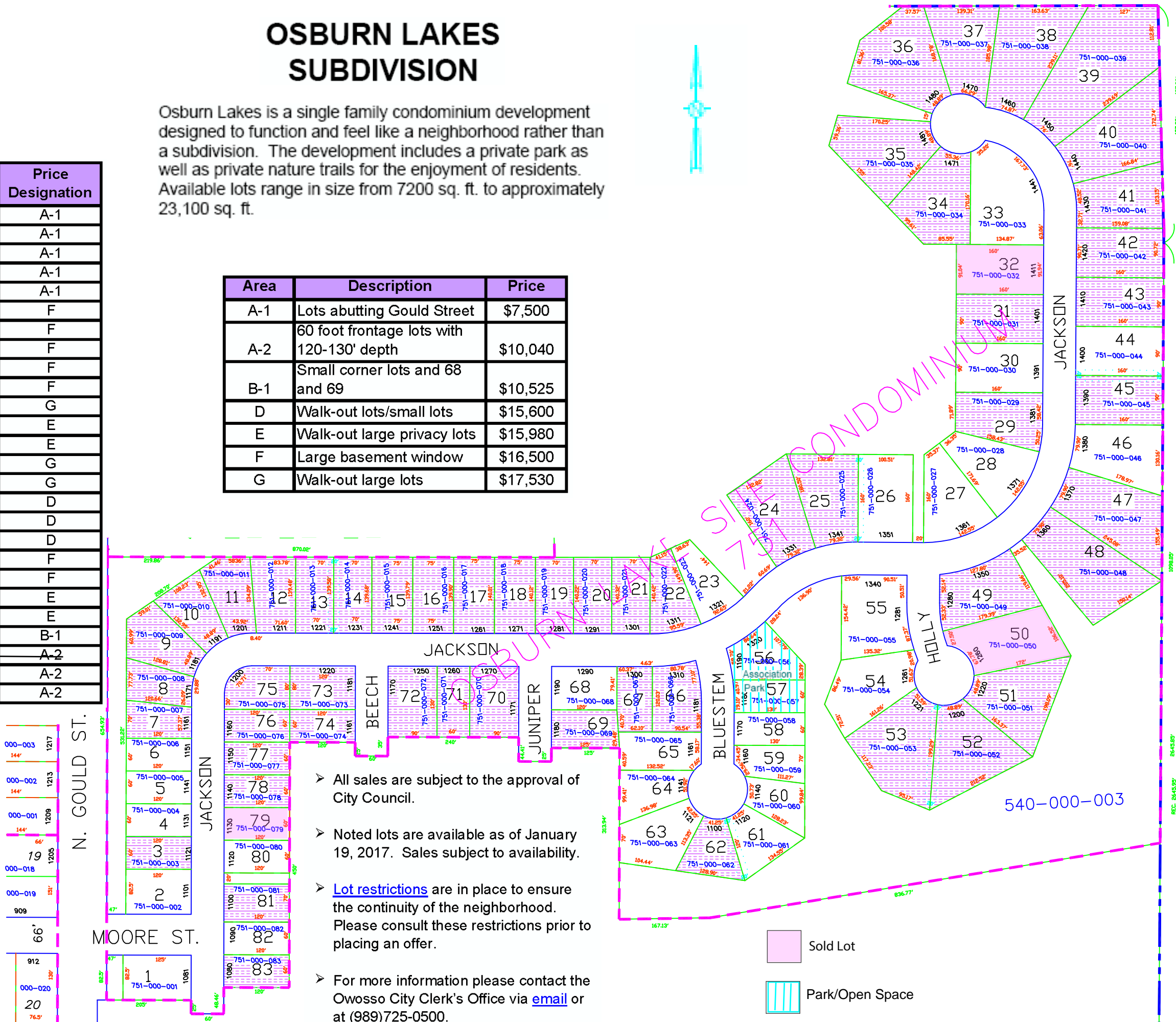


OSBURN LAKES SUBDIVISION

Osburn Lakes is a single family condominium development designed to function and feel like a neighborhood rather than a subdivision. The development includes a private park as well as private nature trails for the enjoyment of residents. Available lots range in size from 7200 sq. ft. to approximately 23,100 sq. ft.

Available Lots	Price Designation
1	A-1
2	A-1
4	A-1
5	A-1
6	A-1
23	F
26	F
27	F
28	F
30	F
33	G
44	E
46	E
54	G
55	G
58	D
59	D
60	D
61	F
63	F
64	E
65	E
68	B-1
79	A-2
80	A-2
82	A-2

Area	Description	Price
A-1	Lots abutting Gould Street	\$7,500
A-2	60 foot frontage lots with 120-130' depth	\$10,040
B-1	Small corner lots and 68 and 69	\$10,525
D	Walk-out lots/small lots	\$15,600
E	Walk-out large privacy lots	\$15,980
F	Large basement window	\$16,500
G	Walk-out large lots	\$17,530



- All sales are subject to the approval of City Council.
- Noted lots are available as of January 19, 2017. Sales subject to availability.
- Lot restrictions are in place to ensure the continuity of the neighborhood. Please consult these restrictions prior to placing an offer.
- For more information please contact the Owosso City Clerk's Office via [email](#) or at (989)725-0500.